

RUDDING PARK

— HARROGATE —

RUDDING PARK HOTEL ACCESSIBILITY TECHNICAL SPECIFICATIONS

Pre-Arrival (By Train, Bus, Taxi, Road, Air or Helicopter)

TRAIN

- Harrogate station (HGT) is situated on Station Parade in the centre of Harrogate and 3.1 miles from the Hotel. The bus station is adjacent to the train station
- There is a taxi rank outside the main entrance to the train station
- 'Real time' timetables (giving the next 24 hours' services), can be accessed by text using the TrainTracker Text Service. Text your journey request to 84 95 0. (Outward calls are charged at standard operator rates and inward replies cost 25p).
- Other train enquires can be accessed by Textphone on 0845 60 50 600, online at website: www.nationalrail.co.uk, or by telephone 08457 48 49 50
- Car Parking is available at the Railway Station for 117 cars. You can find out more about accessibility at the station and Car Parking at www.nationalrail.co.uk/stations/hgt/details.html

BUS

- Bus Stops are located either side of the road at the entrances to the Hotel and the Holiday Park with buses to Harrogate, Leeds and Wetherby
- Bus number 770 runs hourly to Harrogate from the far side of the road, and half hourly to Leeds and Wetherby from the near side.
- Buses are wheelchair accessible.
- Buses are not equipped with audio/visual notification of bus stops
- The bus stops are 0.25 miles from Hotel Reception and 0.05 miles from the Holiday Park Reception.
- They are all on level tarmac areas, with no seat or shelter.
- The route from Reception to the Bus Stops is via the main tarmac driveway. There is a small area of mown grass (approx 2 metres), with a 2" kerb from the driveway onto the grass, just before you reach the stop.
- The driveway to the Hotel is smooth tarmac, with very low level speed bumps (1"/2.5cm) and a gentle slope down to the Hotel
- There are no footpaths or kerbs on the main road.
- Bus Stop (Rudding Park) is number 32006400
- Bus Stop (Rudding Holiday Park) is number 32077140
- Real time bus departure information can be accessed by Text to 63 87 6 at standard rate for outbound and 12p for reply. You will need to enter the Bus Stop Number. Also by email: yournextbus@wypte.gov.uk or by telephone at 0113 2457676

RUDDING PARK

— HARROGATE —

TAXI

- An accessible taxi service is available. We recommend Blueline with its many wheelchair accessible vehicles. Contact: Telephone 01423 530830, email: mail@bluelinetaxis.co.uk, fax: 01423 567949, or you can book online at www.bluelinetaxis.co.uk.
- Throughout Britain, both taxis and private hire vehicles must take assistance dogs on request unless the driver has a medical exemption certificate (usually because of an allergy to dogs). Please inform Blueline of any specific requirements when booking.

ROAD

- From M1/M62
From the M1 or M62 (M621) in Leeds follow the A61 Harrogate signs. At the roundabout with the A658 (Bradford/York Road) follow the brown tourist signs to Rudding Park (3 miles).
- From A1(M)
Exit the A1(M) at Junction 47 signposted Harrogate, Knaresborough and take the exit off the roundabout on to the A59. For the next three consecutive roundabouts take the second exit signposted Bradford. After the fourth roundabout follow the brown tourist signs to Rudding Park.

AIR

- Leeds Bradford Airport is a 30 minute drive away.

HELICOPTER

- Helipad onsite
- Grid reference: OS 104
- Co-ordinates: N53° 58.3' W001° 29.6'

RUDDING PARK

— HARROGATE —

Car Parking and Arrival

- Free 24 hour car parking for 350 cars
- Two Blue Badge spaces 24yds/23m from the main entrance
- Additional parking, close to Reception, is available on request for any Blue Badge holder
- Free valet car parking provided on request
- Surface of the car parking areas is smooth tarmac
- Gently sloping from the furthest car park to the main entrance
- Car parks are well lit, particularly adjacent to the main Reception entrance where there are additional wall lights.
- Lighting includes bollard lights at low level, traditional (old fashioned style carriage lantern electric lights) and more modern higher level street lighting.
- The main entrance is also externally lit by lanterns either side of the double doors
- Guests can be dropped off directly outside Reception
- There is a small lip (1.5cm) and a very gentle, smooth, stone flagged incline to the double entrance doors and entrance porch
- All external stone flagged areas are power washed twice annually
- Half glazed double external entrance doors (127cm clearance)
- External porch doors open inwards and are secured open all day until 11pm when they are closed but not locked.
- Inner porch doors are glass double automatic sliding doors with a clearance width of (132cm).
- Level access to the reception lounge where the reception desk can be found directly on the right hand side
- Porter service 24 hours a day to assist with luggage
- After 11pm the bell alerts the night porter by bleeper
- Water bowl provided for assistance dogs on request



Tarmac Driveway with Clear Signage



Blue Badge Parking Close to Reception

RUDDING PARK

— HARROGATE —

Main Entrance/Reception Lounge

- The entrance porch floor is a fully secured bristle doormat 188cm depth, 239cm width.
- Minimum of two members of staff in Reception at all times
- Guests welcomed personally on arrival and helped with luggage
- Reception desk is chest height when standing
- Low level check in areas are available within the Reception Area
- Magnifying glass and pen and paper are available on request
- There is a portable hearing loop fitted at Reception which staff are trained to use
- Short pile carpet throughout (non-fitted thin rug in front of fire when lit)
- Level access throughout
- The area is evenly and well lit
- Lighting by overhead spotlights, a variety of table lamps and plentiful natural lighting from two floor to ceiling windows
- A variety of seating in the reception lounge, including comfortable armchairs and sofas and low level coffee tables (14.5"/37cm clearance).
- Good spacing between furniture for wheelchair/pushchair access or sight impaired guests.
- Décor is in warm beige tones with the walls being lightly patterned and darker than the carpet
- Part of the wall behind the reception desk is plain in décor and the area is well lit for ease of communication with hearing or sight impaired guests
- There are no shiny or reflective surfaces around the Reception area
- Guests are personally escorted to their rooms and shown how to use the entrance key and other facilities are explained
- Safety and evacuation procedures are clearly displayed in all rooms
- A further familiarisation tour is available on request



Reception entrance with gentle ramp



Large Floor to Ceiling Windows in Reception

RUDDING PARK

— HARROGATE —

Bedrooms (General Information)

- 90 bedrooms
- 38 ground floor bedrooms
- Spacious bedrooms (26 square metres to 70 square metres)
- Plentiful natural light from large windows
- 21 ground floor bedrooms in the Follifoot Wing, 17 in the Ribston Wing
- Bed blocks, bed boards, large size amplified pushbutton telephone
- We will move or remove furniture on request

Accessible/ Adapted Bedrooms (General Information)

- One fully adapted, ground floor, accessible bedroom in the Follifoot Wing. (Please see specifications for Room 271)
- Four additional accessible/adapted rooms, two Ribston Wing, two Follifoot Wing. (Please see specifications for Room 209)
- Follifoot Wing accessible/adapted rooms have automatic entry door, low level switches and controls, partially or fully adapted bathrooms with under floor heating and flashing light/audio fire alarms
- All adapted rooms interconnect with non-adapted rooms, suitable for a personal assistant/carer or friend/family member
- All accessible/adapted rooms are double/twin rooms
- All adjoining non-adapted rooms are double/twin rooms
- The five adapted rooms can be reached on one level and without steps or lifts from the main entrance and reception area.
- The five adapted rooms provide specific facilities for guests with disabilities
- Many non-adapted room and suites in the Follifoot Wing have private balconies, or terraces at ground level
- Many non-adapted rooms may be suitable for guests with ambulant mobility issues or sensory impairment.
- Four spacious Spa Rooms in the Follifoot Wing, each with one of the following bathroom features:- spa bath; sauna or steam room and suitable for those with sensory impairment or ambulant mobility issues
- All bedrooms have 24 hour a day room service
- Two Guest Service Managers
- Porter and Reception/Concierge 24 hours a day

RUDDING PARK

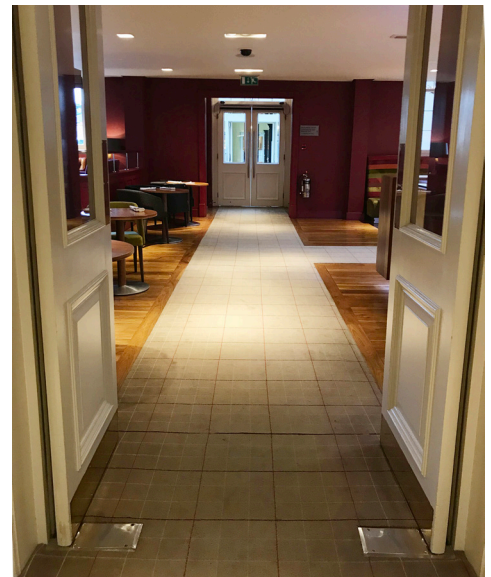
— HARROGATE —

Reception to Accessible/Adapted Bedroom 271 (Follifoot Wing)

- Level access to 271
- 43m from Reception
- Right at reception, straight on and through the Library (with comfortable seating and books to borrow).
- Enter the light and airy stairwell area with non-slip, non-reflective ceramic flooring and clear safety glass enclosing the stairwell and stairs. The clear safety glass is edged with silver metal handrails.
- This area is light and open with lovely views of the grounds
- Continue past the stairwell, on the same level, through a set of double doors where Room 271 is directly on the right hand side opposite the accessible lift

Corridors

- Corridor widths are mainly 2.4m
- Light décor throughout with some colour contrast between floor and walls
- Short pile carpet in beige
- Good overhead electric spotlighting to all corridors
- Dado rail at hand height when walking in. The same/similar colour as the walls
- By necessity, there are sometimes laundry trolleys outside bedrooms to be aware of for sight impaired guests or those with mobility issues
- Good colour contrast with dark wood bedroom doors against light neutral walls
- Comfortable armchair seating, to rest, in wider sections of the corridors. (Seat height 43cm)
- Clear signage in all corridors



Wide Corridors



Clear Signage



Wide corridors with Seating

RUDDING PARK

— HARROGATE —

Room 271 Accessible Specifications

- Large illuminated door number on flat surfaced panel
- Smaller illuminated display indicating occupied/do not disturb
- Low level and high level visitor identification 'spy holes' in outer door
- Keyless entry to Room 271
- Safety lock on outer door
- Automatic entry door (86cm)
- Low level light switches, air conditioning and heating controls
- Sliding door to adjoining bathroom (80cm)
- Super king size zip-lock bed (can become two singles)
- Distance from bed to walls facing bed 160cm to right of bed, 94cm to left of bed
- Bed height 63.5cm
- No useable space under bed but blocks can be provided
- Hypoallergenic bedding and specific pillow choices on request
- Push button panic alarm next to bed, at bed height
- Push button telephone next to the bed
- Low level window with plentiful natural light
- Full length curtains and net curtains – manually operated
- Comfortable armchair seating 43cm seat height
- Writing desk 71cm clearance under, with reading light
- Well lit with electric spotlighting
- Touch operated lighting controls to either side of the bed
- Additional flexible reading lights either side of bed
- Visual (flashing light) and audio fire alarm
- Evacuation, safety information at low level
- Evacuation, safety information sheet in large print
- 34"/86cm door to adjoining non-adapted double bedroom
- Generous wardrobe/storage space with height adjustable clothes rail
- Mini-bar
- 40" LCD flat screen TV
- Additional lighting available on request
- MediaHub for portable devices
- Complimentary internet



Large Illuminated Door Number



Flexible Lighting and Illuminated Lighting Console

RUDDING PARK

— HARROGATE —

271 Accessible Wet Room

- Level access to wet room
- Sliding door to wet room (79cm)
- Non-slip, non-reflective ceramic floor
- Under floor heating
- Wheel in/walk in wet room
- Overhead shower and additional wall mounted handheld lower level shower
- Wall mounted fold-up shower seat at 19"/48cm
- Vertical and horizontal grab rails in shower area
- Low level shower controls
- Toilet height 18"/46cm.
- Raised toilet seat available on request
- Toilet to left wall 102cm (looking towards toilet)
- Toilet to right wall 30cm
- Red pull cord alarm within reach of toilet and shower
- Vanity mirror over washbasin with low reach, touch controlled lighting
- Well lit with spotlights
- Wall mounted wash basin 74cm height, 69cm clearance under
- Horizontal grab rails
- Lever operated hot and cold taps
- Light beige décor
- White towels
- Glass table and upright seating area within wet room on request
- Glass table clearance height 68cm
- Wet room seating height 46cm



Sliding Door to Accessible Wet Room

RUDDING PARK

— HARROGATE —

Reception to Adapted/Accessible Room 209 (Ribston Wing)

- Level access to Room 209
- 24m from Reception
- Right at reception and right again

Room 209 Adapted/Accessible Specifications

- Indented, tactile, door number on metal plate, at standard height
- Low level and high level visitor identification 'spy' holes
- Standard key opening
- Safety lock
- Standard width solid door (87cm) opening inwards
- Sliding door to en suite bathroom (light and easy to use) 79cm
- King size bed 43cm height
- Distance from bed to walls, facing bed, 86cm left, 213cm minimum to right of bed
- Bed height 63cm
- No useable space under the bed, but blocks can be provided
- Hypoallergenic bedding or specific pillows on request
- Red pull cord alarm over bed
- Push button telephone next to bed (non adapted)
- Low level window with plentiful natural light
- Full length curtains, and net curtains, manually operated
- Comfortable armchair seating with 43cm seats
- Writing desk with additional reading lamp
- Standard light switches to either side of the bed
- Well lit with overhead spotlights, table lamps and additional reading lamp on writing table
- Evacuation, safety information at standard height
- Evacuation, safety information in large print format
- 87cm door to adjoining non-adapted double bedroom
- Generous wardrobe/storage space. Low level clothes rail
- Glass circular table with 68cm clearance under
- 32" flat screen TV and magazines
- Additional lighting available on request
- MediaHub for portable devices
- Complimentary internet



Dual Level Spy Holes

RUDDING PARK

— HARROGATE —

209 Adapted Bathroom

- Level access to bathroom
- Non-slip, non-reflective ceramic floor
- Low level bath 43cm to lip, with hot and cold lever operated mixer tap
- Shower over the bath with low level controls
- Hand held shower head
- Grab rails to either side of the bath
- Toilet seat height 44cm
- Additional height toilet seat available on request
- Toilet to left wall 46cm
- Toilet to right wall 46cm
- Well lit with overhead spotlights
- Washbasin clearance under 63cm
- Washbasin height 79cm
- Lever operated hot and cold taps over wash basin
- Beige walls, flooring in slightly darker colour
- Wooden door and panels to bath, basin and behind toilet (good contrast)
- White towels

Standard Bedroom 221 (Ribston Wing)

- Level access from Reception
- Tactile indented door number on metal plate
- Main door opening width 76cm
- Bed to left wall 203cm
- Bed to right wall 61cm
- Bed height 66cm
- Standard push button telephone
- Good natural light from large window
- Full length curtains and nets, manually operated
- Well lit room with overhead spotlights, table lamps by the bed and reading light on desk
- Furnished with comfortable seating 43cm height
- Writing desk, height 63cm with reading light
- Glazed table with four wrought iron legs 68cm
- Light switches either side of bed
- Space for additional bed if necessary
- Additional lighting available on request
- Light, neutral décor with little colour contrast between walls and carpet
- Short pile carpet in bedroom
- 32" flat screen television



Spacious Ribston Wing Room

RUDDING PARK

— HARROGATE —

221 Non- Adapted Bathroom

- Level access to bathroom
- Door clearance 70cm
- Non-slip/non-reflective ceramic flooring
- Light beige walls, floor colour slightly darker
- Well lit with overhead spotlights
- Low level bath 46cm height with hand turning hot and cold mixer tap
- Shower over bath with handheld adjustable showerhead
- Toilet height 46cm
- Washbasin height 81cm, 51cm clearance
- Hot and cold hand turning taps to washbasin
- Wooden door and panels to bath, basin and behind toilet with good colour contrast
- White towels

Standard Bedroom 265 (Follifoot Wing)

- Level access from Reception
- Large scale, illuminated door number on flat surfaced panel
- Illuminated display indicating occupied/do not disturb
- Visual and audio fire alarm
- Door opening to 87cm
- Super King zip lock bed
- Bed height 61cm
- 127cm to right of bed, 254cm minimum to left
- Enough space for additional single bed for carer/friend
- Touch operated lighting console next to bed
- Flexible spot/reading lights to either side of bed
- No useable space under the bed (blocks can be provided)
- One comfortable chair and sofa (both height 43cm)
- Good natural light from large low window
- Manually operated full length curtain and nets
- Good colour contrast with door
- Neutral beige décor, with short pile carpeting in slightly darker shade
- Plentiful lighting from overhead spotlights, standard lamp and reading lights
- 40" flat screen TV
- Air Conditioning
- Mini-bar
- Push button telephone on writing desk



Standard Follifoot Wing Room with Terrace

RUDDING PARK

— HARROGATE —

265 Non-Adapted Bathroom

- Level access to bathroom
- Door opening inwards with 69cm clearance
- Toilet height 46cm
- Wall mounted wash hand basin (height 81cm, 58cm clearance)
- Roll top bath (46cm) with central, lever operated mixer tap and hand held shower
- Walk in shower (66cm clearance) with overhead shower head and hand held adjustable shower head
- Non-slip/non-reflective ceramic flooring
- Under floor heating
- Good overhead spotlights
- Light beige décor throughout
- White towels

Evacuation from Bedrooms

- Hotel layout with position of bedroom, exits and procedures displayed clearly at standing height in all bedrooms
- Follifoot Wing bedrooms have audio and visual fire alarm
- Evacuation procedures in large print in all adapted bedrooms
- Exits clearly displayed/pictorial at ceiling height
- Duty Manager and up to 10 trained Fire Marshalls available
- Minimum of two trained Fire Marshalls at any time
- Disabled guests will be given priority with evacuation procedures
- Fire extinguishers with water/foam and powder are highlighted on the evacuation information and placed at regular and strategic points around the Hotel

Lifts

There are three lifts, one 'fully accessible' lift with audio/visual description (opposite accessible 271) in the Follifoot Wing. There are a further two lifts in the Ribston Wing, these have visual description only.

Lift Opposite Room 271

- Push button entry at low level
- Door opens to 81cm
- Low level controls
- Grab rails
- Audio and visual description
- Mirror wall at back of lift
- Good overhead lighting
- Alarm with illuminated pictorial description

RUDDING PARK

HARROGATE

Lift in Conference and Banqueting Area (House Level Access from Bedroom Wings)

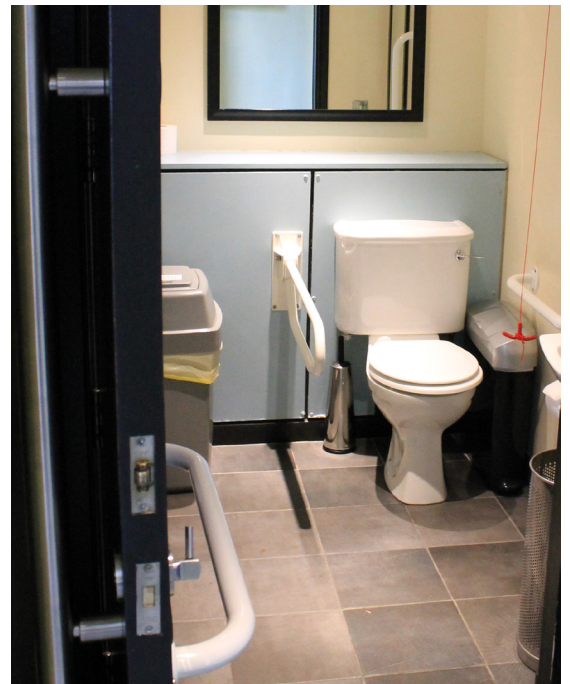
- 81cm door clearance
- Internal depth of 145cm
- Tactile raised buttons
- Wall mounted mirror
- Visual description only

Public Toilets

- There are two sets of accessible/adapted toilets for the use of male and female guests
- These are situated near Clocktower Restaurant and in the Conference and Banqueting area of the Hotel
- There is clear signage to all toilet facilities
- Ladies, Gents and adapted toilet facilities are found together on the ground floor with level access from Reception
- Additionally, Ladies (close to Clocktower restaurant) includes one ambulant/adapted toilet.

Accessible/Adapted Toilet with Baby Changing Facilities (Near Clocktower Restaurant)

- Door opens inwards and to the left with 79cm clearance
- Horizontal grab rail to the back of the open door
- Two vertical and one horizontal grab rail to either side of toilet (horizontal to the left as seated)
- Mirror to the back of the toilet cubicle
- Toilet height 43cm
- From toilet to right wall 86cm
- Wash basin 71cm height with 66cm clearance
- Hot and cold lever operated mixer tap
- Paper towels for hand drying
- Baby changing platform folds away to the left wall
- Disposal bin for nappies or incontinence pads
- Safety lock



Clocktower Accessible Toilet

RUDDING PARK

— HARROGATE —

Adapted Toilet 2 (Conference and Banqueting Area)

- Level access from Reception
- Disabled toilet sign on white painted door
- Door opening to the left with 84cm clearance
- Toilet height 46cm
- Toilet to wall on left 31cm and 107cm on right
- Lever operated toilet flush
- Vertical and horizontal grab rails to left and right of toilet
- Washbasin height 81cm and 71cm clearance under
- Wall mounted washbasin with hot and cold lever operated mixer tap
- Black and white tiled floor and left wall
- Good colour contrast in rust red behind toilet and washbasin
- Slide operated door lock

Ambulant/Adapted toilet (Within Ladies Toilet near Clocktower Restaurant)

- Two doors to shared hand wash area 76cm clearance
- Double washbasin with hot and cold manual turn taps
- Large mirror behind
- Spotlighting (slightly lower level lighting here)
- Paper towels hand drying
- Inner door to adapted toilet opens inwards to the left
- 79cm clear access
- Toilet height 43cm
- From toilet to right wall 61cm and 30cm to left
- Hand washbasin with turning hot and cold taps
- Washbasin height 79cm and 69cm clearance
- Grab rails
- Manual turning lock

Additional Ambulant/Non-Adapted Toilets

Ladies and Gentlemen's toilets can also be found on the upper levels of the Conference and Banqueting area and outside the private Cinema in the Follifoot Wing.

RUDDING PARK

— HARROGATE —

Bar/Lounges/Restaurant

Rudding Park offers a variety of dining options. Clocktower restaurant has won numerous awards, including 'Best Restaurant in Yorkshire and the North East' and 'Banqueting Chef of the Year'. Dining is available 24 hours a day 7 days a week. Staff are happy to read out menus on request.

- Level access from Reception
- The Bar/Lounge area is reached through double doors (122cm clearance) from the main reception area
- The pink chandelier restaurant is at the far end of the Bar, to the right through a 86cm doorway
- The Conservatory can be found at the far end of the Bar via double doors which are fixed open
- There is a beautiful olive tree in the centre of the Conservatory surrounded by a slightly raised lip (4cm height)
- The outside seating area has level access from the Atrium, alternatively there is small raised lip (4cm) from the Conservatory
- The outside seating area is on two levels; upper levels are reached by steps or by gentle sloping stone flagged ramps
- Stone flagging is power cleaned twice a year
- The pink chandelier restaurant can also be reached via double doors from the Conservatory
- All areas are level access apart from a small raised area of the Bar Lounge where there are two steps (there is a portable ramp which can be used here if required)
- There is an abundance of natural light from ceiling skylight windows, large windows to all sides and from the Conservatory Restaurant at the far end of the Bar area
- There are additionally ceiling spotlights and table lamps
- The flooring in the dining area nearest the Bar is predominantly varnished wood but there is a carpeted aisle leading in a T shape all around the Bar area
- There is a variety of seating and chairs (some with full surround arms and backs), sofas and low level tables (clearance 37cm), around pedestal tables with a clearance of 74cm.
- The ceiling around the Bar and immediate lounge area is lower level than some part of the building, good for suppressing background noise and helpful for guests who are hearing impaired



Level Access Through Bar



Level Access to Terrace

RUDDING PARK

— HARROGATE —

Restaurant, Conservatory and Terrace

- Table service available 24 hours a day, 7 days a week
- Exceptional service – staff will read menus and pay attention to the individual needs of all guests
- The dining areas are on one level except for a small area at one end with two steps (portable ramp can be provided on request)
- There is lower lighting in one of the dining areas nearest to the Bar where semi-circular seating provides good soundproofing for hard of hearing guests
- Some areas have wooden varnished flooring but staff are advised to wear rubber soled shoes to help keep background noise to a minimum
- The Restaurant and the adjacent Conservatory have plentiful natural light from large floor length windows
- Guests using wheelchairs will be seated first allowing them to choose their seat within a party.
- The Restaurant has an assortment of circular and square tables of 74cm clearance



Level Access to Conservatory



Level Access Through to Restaurant

RUDDING PARK

— HARROGATE —

Conferences, Banqueting, Meetings and Weddings

Rudding Park won the prestigious Conde Nast Johansens Award for Excellence 2011 for customer service. The staff will do their utmost to ensure that every guest within your party is catered for to the highest standard.

- Level access from Reception
- Accessed from outside via three stone steps leading to large double doors (portable ramp on request)
- Reception desk at chest height when standing
- Hearing loop at Reception and staff trained in its use
- Pen, paper and magnifying glass available on request
- All have large windows with an abundance of natural light
- There is good spacing between and around furniture, but furniture can be moved or removed on request
- Variety of lighting including overhead spotlights, standard lamps and table lamps. Additional lighting can be provided on request
- Maximum capacity of 350 people
- Variety of size of rooms with their own individual styles, some with their own bars or breakout areas
- Full details of the conference and meeting room sizes, capacities and services offered can be found in the Meeting Rooms Factfile.
- There is level access from Reception to five of the large rooms
- There are a further 11 conference/meeting rooms on the first floor reached either in the non-adapted lift or by the staircase.
- First floor rooms are accessed by the non-adapted lift with 81cm access
- First floor rooms can be reached via flight of 27 stairs (with small landing area to rest after 13 stairs)
- The stairs have short pile, traditional stair carpet, secured to wooden painted stairs
- The carpet is lightly patterned and brown, the visible wooden strip to each side is white
- There are spindle banisters in brown wood
- This area has plenty of overhead natural light from the glass domed ceiling
- There is excellent lighting from overhead spotlights and table lamps at the landing
- The corridors in this part of the building are mainly wide and open with good lighting, short pile carpet, and good wall colour contrast with floors.
- Some of the corridors on the upper levels have 76cm door clearance.
- Level access to adapted toilet 2 within the Conference area
- Please refer to our main brochure for a list of activities, menus, marquees etc. We will do our best to adapt any facilities to your requirements.



Well Lit Conference Room



Well Lit Staircase

RUDDING PARK

— HARROGATE —

Leisure Facilities

- Rudding Park Spa offers can be accessed by its own entrance or via the hotel
- A gym and 14 seat private cinema can be found in the Follifoot Wing.
- Rudding Holiday Park and The Deer House Pub (with an outside swimming pool and children's play area) are adjacent to the Hotel accessed either on foot/wheel via tarmac pathways or road.
- Rudding Park Golf, is adjacent to the Holiday Park with its exceptional 18 hole Hawtree Course, Repton Short Course and Golf Academy with driving range.
- Level access to Reception at the Holiday Park
- Golf Clubhouse and Golf Academy have level access from smooth tarmac drives and paths or over mown grass.
- There are some inclines on the Holiday Park

14 Seat Private Cinema (Please Reserve in Advance)

- Lower ground floor of the Follifoot Wing adjacent to the spa
- 86cm entry door clearance
- 81cm clearance to the inner area of the Cinema
- 5 seats have level access
- Additional space for wheelchair at the front
- Beanbags for lounging
- Low lighting with small 'star' spotlights in the ceiling
- Audio surround sound



Cinema – 5 Seats with Level Access

Additional/Non-Adapted Toilet Adjacent to the Cinema

- Outer door 81cm
- Inner door 68cm
- Toilet height 46cm
- Toilet to right wall 122cm minimum
- Washbasin height 79cm and 66cm clearance
- Toilet to wall in front 76cm
- Non-slip, non-reflective ceramic tiled floor
- Beige walls and floors
- Push button toilet flush
- Lever operated mixer tap
- Well lit with overhead spotlights
- Manual door lock

RUDDING PARK

— HARROGATE —

Outdoor Space

- Gently sloping grounds around the house
- Tarmac driveways and footpaths within the grounds

Accessibility Awards

Winner of Happy Holidays Award 2013
Disabled Motoring UK



Future Plans

Tarmac footpaths and driveways

To provide ongoing training for all reception and customer facing staff.

Further details can be found on our website ruddingpark.co.uk
Alternatively, you can telephone 01423 871350 or email sales@ruddingpark.com

Contact Information

Address Rudding Park, Follifoot, Harrogate, North Yorkshire, HG3 1JH
Phone 01423 871350
Fax 01423 872286

LOCAL EQUIPMENT HIRE

- Yorkshire Care Equipment: Telephone: 01423 799 960, fax: 01423 202116, or complete and submit the online enquiry form at www.yorkshirecareequipment.com.

LOCAL ACCESSIBLE TAXI

- Blueline: Telephone 01423 530830, email: mail@bluelinetaxis.co.uk, fax: 01423 567949, or you can book online at www.bluelinetaxis.co.uk.

LOCAL ACCESSIBLE BUS SERVICE

- Text to 63 87 6 (charged at standard rate for outbound and 12p for reply). You will need to enter the Bus Stop Number as displayed under Pre-Arrival, Bus on this statement. Also by email: yournextbus@wypte.gov.uk or by telephone at 0113 2457676

LOCAL HOSPITAL

- Harrogate Hospital A&E is less than two miles away. In case of emergency please call Reception on 01423 871350. Please report all accidents or minor medical problems to Reception.

LOCAL DOCTOR

- Eastgate Surgery, 31b York Place, Knaresborough. Tel: 01423 557200, or The Health Centre Knaresborough Road, Harrogate. Tel: 01423 557225 (Appointments only)